



CETAQUA
CENTRO TECNOLÓGICO DEL AGUA

The SEMPRE-BIO project: SEcuring doMestic PRoduction of cost-Effective BIOMethane



SEMPRE-BIO Project...

SEMPRE-BIO aims to demonstrate novel and cost-effective biomethane production solutions and pathways, deemed essential to achieve the European Green Deal and climate and energy targets for 2030 and the net zero greenhouse gas emissions by 2050, and to increase the market up-take of biomethane related technologies.

...in numbers

42

Months



16

Partners



6

Countries



9.9M

Funding



... in OUTCOMES

SEMPRE-BIO expects to meet 4 specific outcomes of the Horizon Europe call resulting in a **CLEANER, MORE SUSTAINABLE AND SECURE ENERGY SUPPLY**.

1. Increase cost-effectiveness of the conversion in biomethane production.
2. Diversify the conversion technology basis for biomethane product.
3. Contribute to market up-take of biomethane related technologies in the gas market.
4. Contribute to the demonstration at nearly industrial-scale novel conversion technologies to produce biomethane from wastewater and Woody biomass.

...in INNOVATIONS & DEMONSTRATIONS

SEMPRE-BIO will take technological solutions FROM MODELS TO REALITY in 3 European Biomethane Innovation Ecosystems (EBIE) where 5 biomethane innovations technologies will be tested. SEMPRE-BIO will demonstrate novel and cost-effective biomethane production solutions to support circular economy and reduce dependence on fossil fuels.

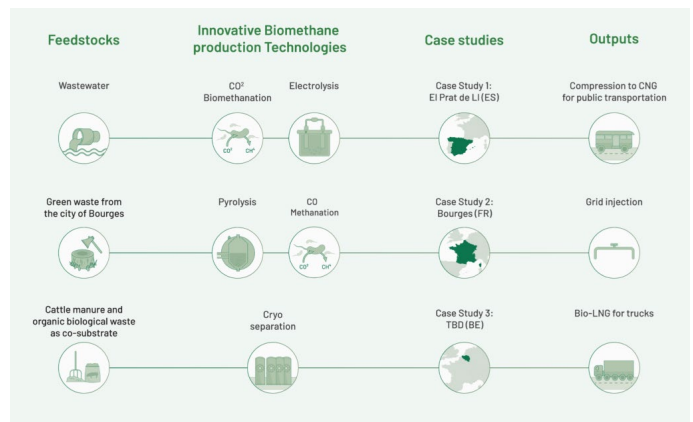
SEMPRE-BIO partners:



ProPuls



... in PILLARS



The SEMPRE-BIO EBIEs



CS1: Aigües de Barcelona, Barcelona, Spain



CS2: Bourges, France



CS3: De Zwanebloem, Adinkerke, Belgium



The SEMPRE-BIO project has received funding from the European Union's HORIZON-CL5-2021-D3-03-16 programme under grant agreement N° 101084297. Views and opinions expressed are however those of the author(s) only and do not necessarily reflect those of the European Union or CINEA. Neither the European Union nor the granting authority can be held responsible for them.